

# EXPRESS YOURSELF WITH COLOUR

Written by  
DARREN PALMER



Create your *sanctuary*

There are few opportunities where using the skills and knowledge acquired over my career can be genuinely put to good use like when an iconic brand like Caroma decides to move in an even more design focused and lifestyle driven direction.

Collaborating at such an important and pivotal moment in the evolution of this Caroma collection and the creation of 5 adaptable and fashionable colour finishes featured across all aspects of the newly reinvigorated Urbane II and Liano II ranges has provided me with the opportunity to create new spaces within the Caroma flagship showrooms and to help communicate the benefits and features of each of the colours within the range.



Fashion-forward frontrunner Brushed Brass, together with Gunmetal, has become the new fashion staple alongside perennial favourites Matte Black, Chrome and the beautifully adaptable Brushed Nickel. These colour options provide a solution for any bathroom design palette, irrespective of personal desires for type, mood or style. With Caroma's latest colour collection you'll find a style, colour and finish to fall head over heels for, all in line with the latest bathroom design directions.

With Caroma you can create your sanctuary.

*Darren Palmer*  
**DARREN PALMER**  
Interior Designer





# Introducing BRUSHED BRASS

It's easy to embrace a new world of colour when it comes to bathrooms, and there's no better place to start than with your tapware, shower, and accessories as the ideal way to complement your bathroom schemes. Think of the little black dress as a perfect example of how to elevate by accessory. A timeless outfit can be simple and elegant but can become something truly chic and charming with the right jewellery. Tapware has the potential to perform the same task in a no less dramatic and transformative way.

Bold, beautiful and balanced, Brushed Brass has the warm richness and opulence that comes with a gold toned metallic. With deep intrigue and without the brashness of gold, Brushed Brass is the hero of Caroma's range and indeed for every home seeking an opulent and luxurious feeling.







Add to the lustre of brass the subtle light diffusion of a brushed finish and you have the perfect elevation to any bathroom scheme, whether its neutral, colourful, textured or any blend of the three.

Timeless yet totally on trend, a Brushed Brass finish has the power to pair with the most refined schemes as well as with the most adventurous and fitting seamlessly into every design nuance in between.

The warm tones can subtly elevate any scheme and partnered with the handle and spout styles within the Liano II and Urbane II ranges, you have the perfect, expressive, fashion-forward and luxurious inclusion for homes of all styles Australia wide.

**BALANCE**

**BEAUTY**

**BOLDNESS**



BRUSHED  
BRASS

# Darren Palmer's NATURE REFINED

## BALANCE

The two things all successful interiors have in common are complement and contrast.

Brass is the perfect inclusion for either, but in my flagship store bathroom design, Nature Refined, I've used Brushed Brass as balance to an otherwise Australian native forest inspired space.

The touch of glamour and shine balances out the matt finishes and earthy tones, elevating the space from a simple, green-based neutral one to something with a little more shimmer and shine.







# BEAUTY

Soft and subtle with a slightly grey base, the warm focus of Brushed Brass plays perfectly with pinks, reds, blushes and nudes.

The contrasting accents of soft pastels blending beautifully with the diffused lustre of a Brushed Brass finish.

The Liano II forms are soft and graceful, just like the finish of Brushed Brass especially when included in a pretty and pink based palette.





# BOLDNESS

Colour blocking is alive and well, with contrast being the key. An interesting and dramatic scheme with rich colours and courageous inclusions is the goal, with Brushed Brass in these instances playing the

role of hero and accent pieces. With all elements, from taps, handles, accessories and even hinges in the same finish, Brushed Brass perfectly complements itself in a bold scheme.



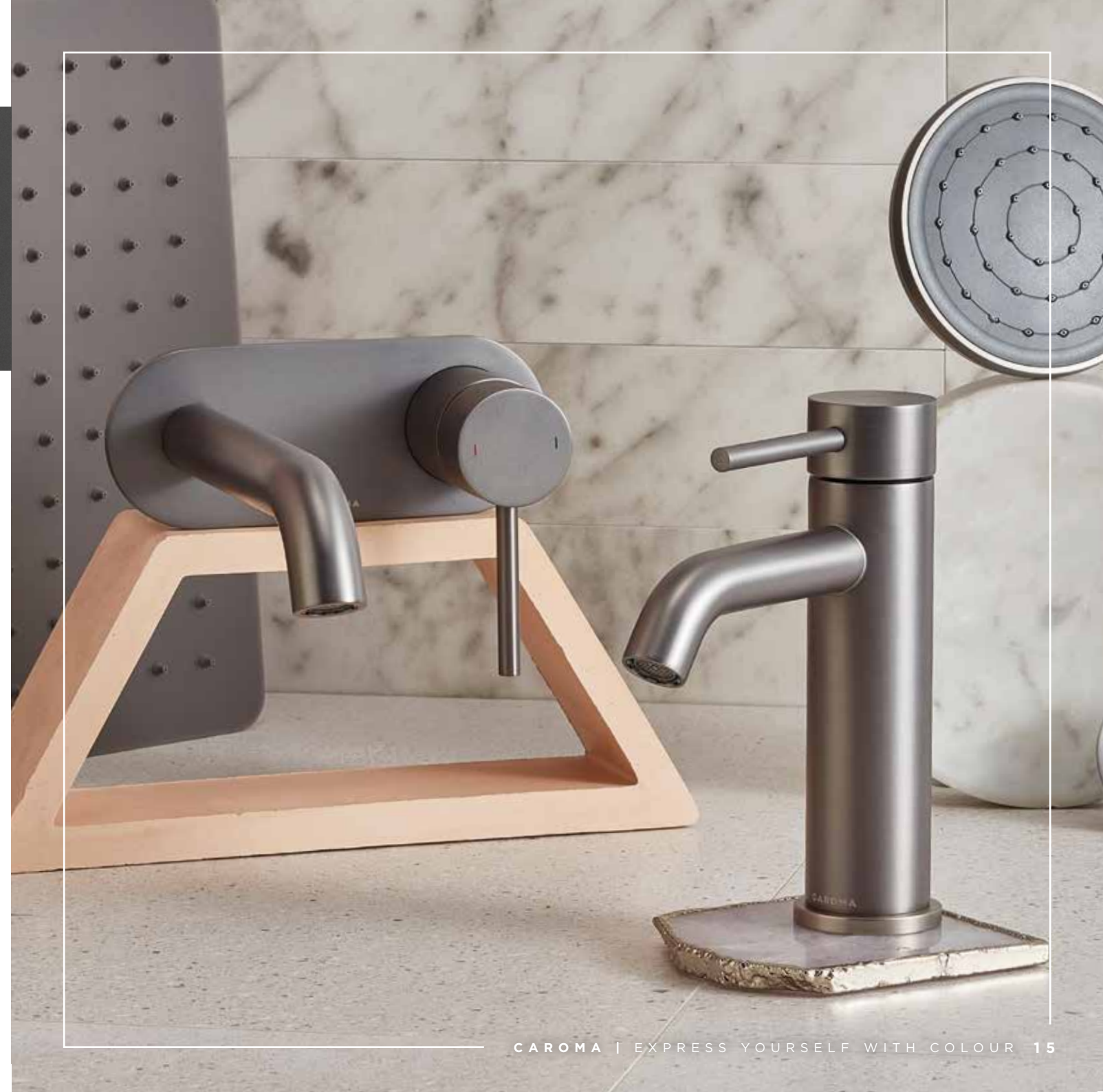




# Introducing GUNMETAL

Potentially one of the most exciting modern finishes, Gunmetal is bold yet discrete. The finish is darker than most but softer than black, featuring an added metallic sheen to its charcoal colouring, it becomes one of the more moody and intriguing finishes to grace our modern bathroom sanctuaries.

Boldly defining the shape of any inclusion it coats, it can help carve graphic detail into your bathrooms by setting apart the tapware and accessories from the rest of your scheme, creating a sharp and exciting look without creating a distraction.





As it is fundamentally a tone of grey, Gunmetal can be adapted to a wide array of interior palettes featuring colour, timber, tonal variations of grey, white or black-based monochromatic schemes as well as softer, classic neutral palettes. Could Gunmetal be the new black? It's certainly adaptable enough to take its place beside black on the mantel

of all-round utility and adaptability, adding a little extra punch to almost any and every type of interior scheme. Gunmetal looks great in a subtle satin finish, a diffused matt metallic and a brushed finish as featured in the Urbane II and Liano II ranges. As far as a more dramatic metallic inclusion goes, Gunmetal is hard to beat.



**GALLANT**



**GRAPHIC**



**GRACEFUL**





## *Darren Palmer's* **CITY LIGHTS GALLANT**

Splendid, stately, spirited, brave. Usually a word used to describe a gentleman, but when it comes to the Gunmetal range, gallantry represents a splendidly spirited choice in tapware and accessories that adds another dimension to any moody bathroom with the addition of a tonal play with metallic interest.

It's subtle and smooth as part of a dark grey scheme and adds something refined, appealing and tactile whilst being understated, subtle and refined. There is a masculinity that could be associated to Gunmetal but it will work in bathrooms of many kinds, such is its broad appeal and adaptability.







# GRAPHIC

The geometry of the Urbane II and Liano II range of taps, showers and accessories lends itself perfectly to being singled out as a feature due to its form. Emphasizing that form further, with a dramatic contrast

such as that of a charcoal coloured, Gunmetal metallic finish, allows that geometry to be perfect in a graphic driven interior palette.



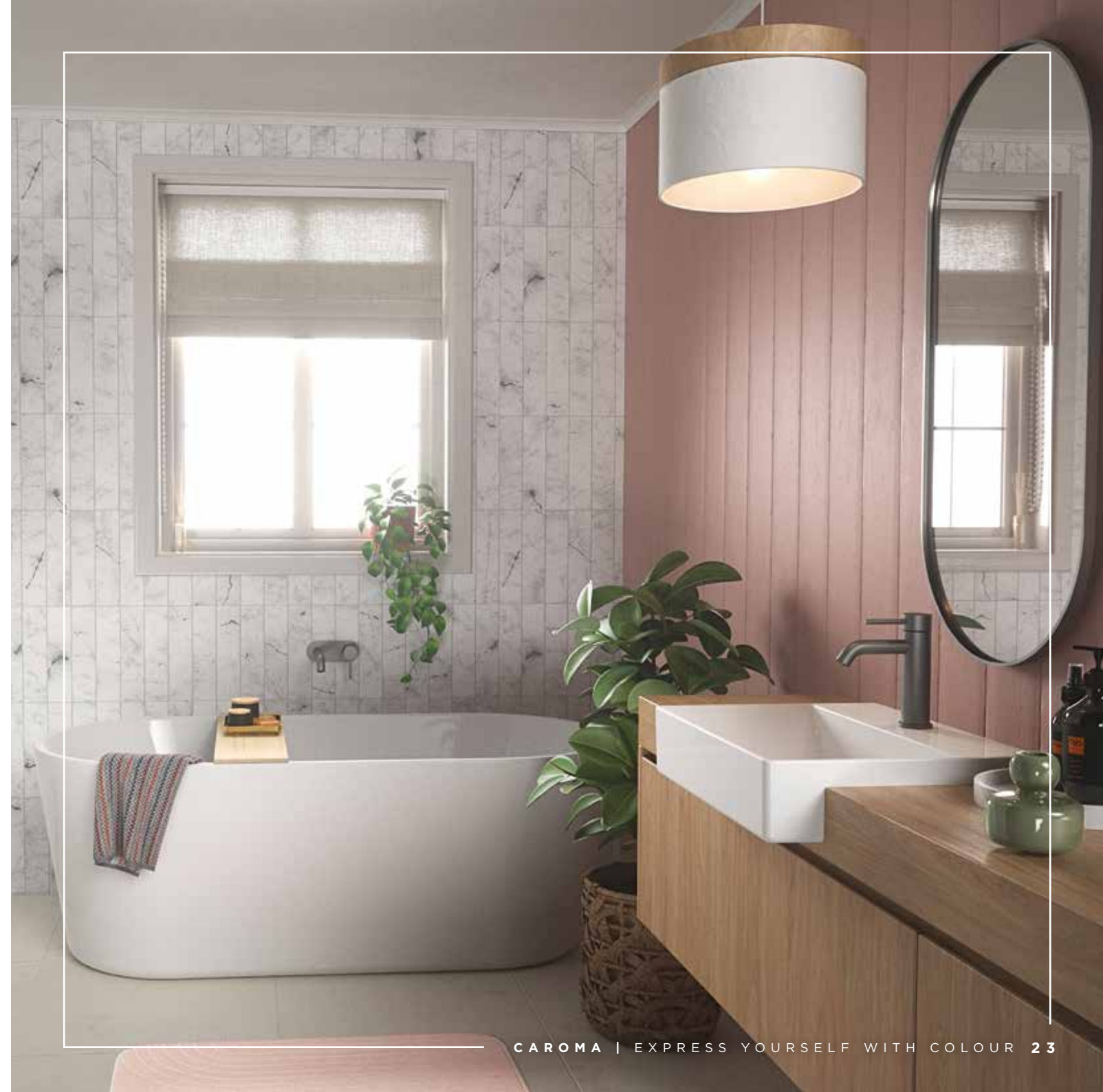




# GRACEFUL

Pretty with pink, nice with neutral and gorgeous with grey, Gunmetal can be used to contrast an otherwise soft and inviting palette in line with today's bathroom design trends. Marble veins are highlighted perfectly with the deep

grey of a Gunmetal finish. Soft timbers, pastels and neutral tones get a little extra kick with the inclusion of the lustre and sensuality of Gunmetal's deep charcoal.





BRUSHED  
NICKEL

# Introducing BRUSHED NICKEL

Quite often all an inclusion needs to elevate itself is something a little extra. Perhaps a slight refinement of form, a change to the tone or an adjustment to the texture. Often a thing we've grown to know and love, can be adjusted ever so slightly to set it aside from the pack.

A Brushed Nickel finish couldn't be a better example. Think of the timeless utility of stainless steel and the broad appeal of Chrome bridged in a slightly warmer and silkier finish and you have Brushed Nickel.





If you like the idea of having a neutral, grey-based interior scheme or accents of metallic that feel interesting yet timeless, Brushed Nickel is a perfect, nuanced and natural inclusion.

Being a popular modern finish in interior fittings such as door lever pulls and cabinet handles, Brushed Nickel has never been more appropriate for every accessory from pop up waste to toilet seat hinge. Brushed Nickel can be as predictable in finish as it is interesting and beautiful and has a long history in interiors, lighting, furniture and even in industry.

Now the nostalgia of Brushed Nickel can be enjoyed in bathrooms of all tastes and styles.



## NOSTALGIA



## NUANCE



## NATURAL







# NUANCE

A monochromatic scheme is one of the hardest to pull off, with neutral schemes a very close second. The key to having a successful result in either instance is the nuanced layering of textures and finishes. Brushed Nickel can be used

in warm beige neutral palettes, white palettes and grey palettes alike. It's a great way to add another subtle layer to an understated and stylish scheme, albeit with a little more modern edge.







# NATURAL

The key to a naturally based scheme is utilising the colours and materials immediately and easily found in nature. The soft, warm greys in our native flora are a perfect reference point for inclusion in a naturally inspired bathroom and

Brushed Nickel is a wonderful example of exactly that. Layer other natural colours and materials such as eucalypt, sage, stone and timber and you'll strike the perfect natural balance in your bathroom.



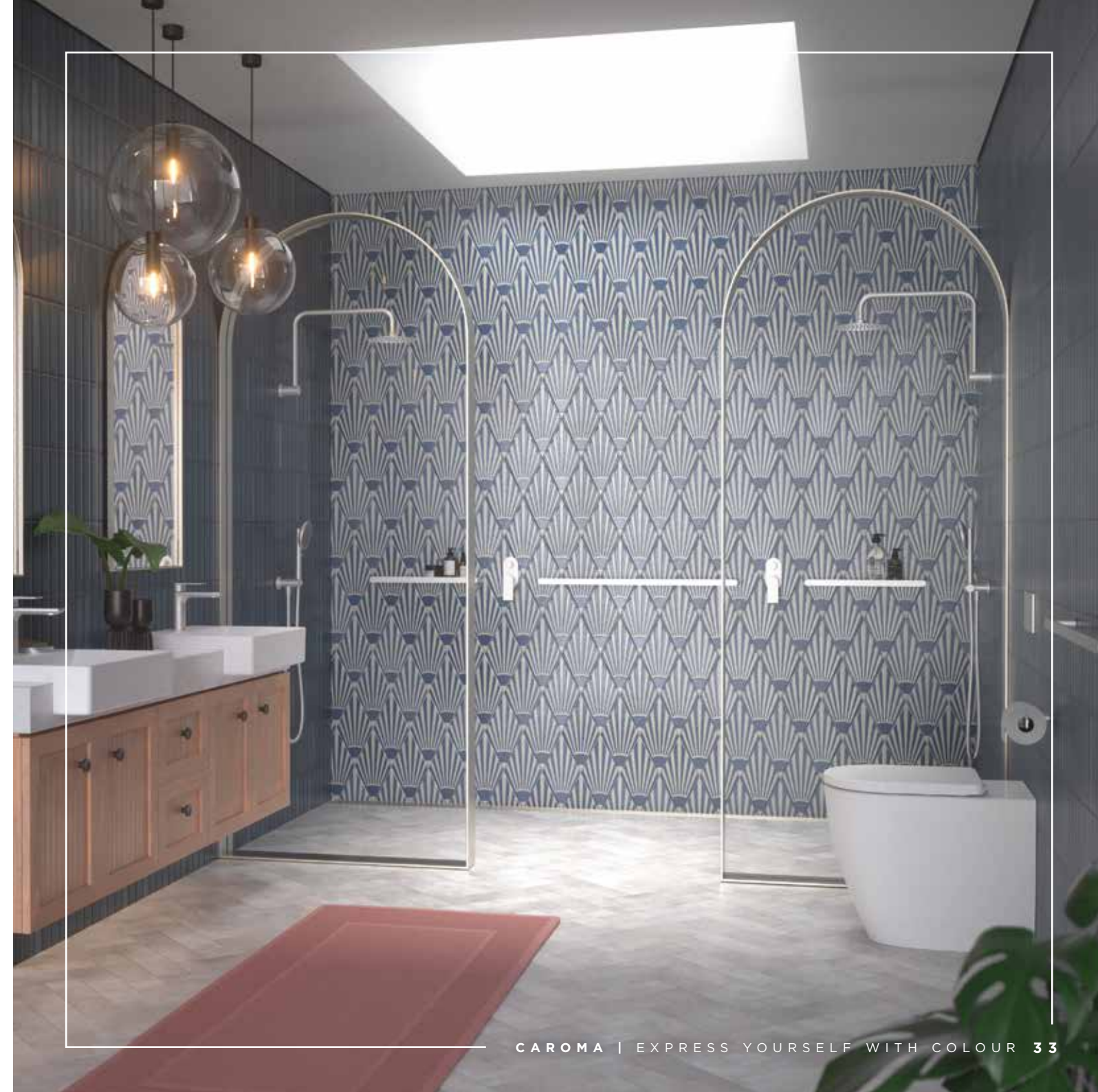




# NOSTALGIA

As a finish that has spanned hundreds if not thousands of years, Brushed Nickel is the perfect inclusion to a modern interior scheme that wants to hark back to a bygone era. Whether you're

embracing the roaring 20s, the fab 50s, the swinging 60s or any period from days gone by, you will find the soft adaptability of Brushed Nickel a glamorous yet subtle inclusion.





MATTE  
BLACK

# Introducing MATTE BLACK

Black is the new black. In fact, it's the all-inclusive, modern finish that's been on trend for long enough now to be considered timeless. It has the capacity to add impact and contrast to most bathrooms, from modern to traditional, being simple enough not to register as another colour but rather as a point of interest in most palettes.

It's dark, glamorous and gorgeous and due to its bold simplicity, it can sit alongside any colour, making it perfect for anyone seeking an elevation of their bathroom material and colour palette.







When paired perfectly with a matte finish black adds interest but doesn't distract by drawing unwanted attention. A matte finish also means that keeping it pristine and fingerprint free is an easier task for everyday living, making it a lower maintenance yet high impact inclusion.

Due to the very minimal lack of variation in true black finishes, Matte Black can be used across interior finishes such as laminates, levers and appliances both large and small. This gives it a wide range of partners in a design scheme that it is simple to use across an entire home, making it easier now, more than ever, to include in the bathrooms of Australian homes.



**MARVELOUS**



**MODERN**



**MOODY**



MATTE  
BLACK

# MODERN

Pick a popular, modern palette and you'll find that Matte Black can blend right in. It's easy to complement, it's easy to use as a contrast point and it's different enough that its simple inclusion can turn an interesting colour palette into something with wow factor.

Modern accessories like ceramics, décor items and even bathroom sanitation products like bins and toilet paper are readily available in black, making it a simple choice to pack an extra punch in your bathroom scheme.





# MOODY

Deep and dark goes hand in hand with moody and sultry. Deep russet plums, desaturated purples, terracottas, ruby reds and ochres work beautifully with the satin surface of black tapware.

Accentuating the form of a base plate or emphasising the drama of a showerhead,

Matte Black can either blend in with a moody scheme or add an element of drama. Play with the contrast of a shiny tiled surface and the smooth light diffusion of a matte finish to give your bathroom material scheme some interest and edge.





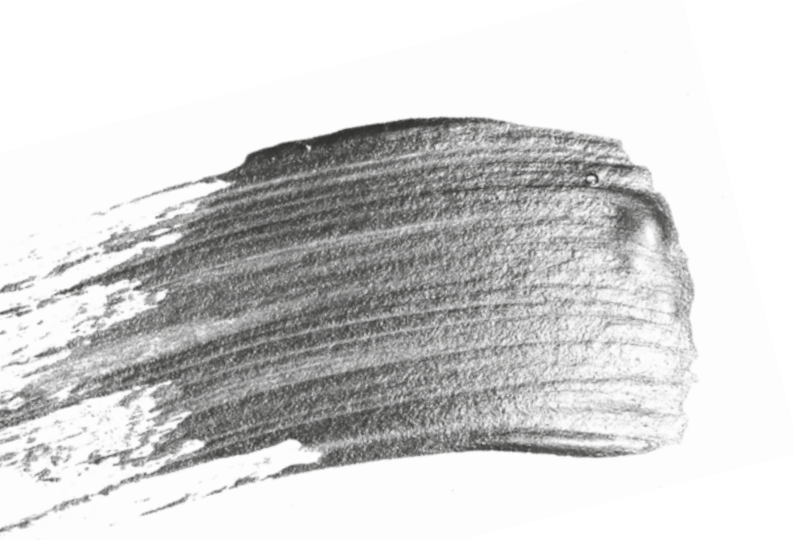
# MARVELOUS

Colour is alive and well in modern bathroom schemes. If you're working with a specific array of hues, especially within a confined area of the colour spectrum you may want to keep your scheme simple and pure. Matte Black tapware will fit right alongside any colour choice, especially those with some depth and darkness within them,

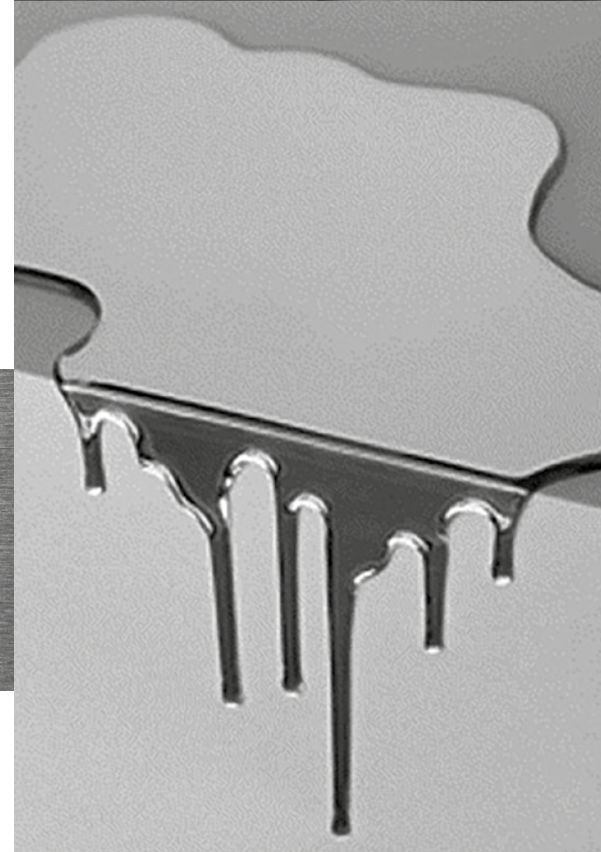
without distracting from the choice to emphasise colour in your tile choices, towels or décor. Black supports and bolsters but never fights against other inclusions, so you can be bold in your choices knowing that Matte Black is a marvellous match to your bold design decisions.







The most timeless and common of all tapware finishes, Chrome has stood the test of time due to its adaptability and familiarity. Chrome is a true neutral grey based metallic, that doesn't lean toward any colour hue or stylistic direction making it an adaptable and beautiful inclusion.



CHROME

## Introducing CHROME





Tonal variations on Chrome are minimal across ranges and hardware types, meaning they can seamlessly integrate into an existing bathroom or a brand new one. The wide array of products in the Urbane II and Liano II ranges, means that the Chrome products can be mixed and matched with any other Caroma product you desire.



COOL



CLASSICAL



CREATIVE



## COOL

Silver based grey aligns nicely with a cool based scheme, from the calming tones of blue to the tranquillity of green. Highly reflective with its mirror-like sheen you get the colours of your tile choices being

reflected back to you in true colour.  
This makes Chrome the perfect choice  
to discreetly and effectively blend into  
your bathroom and complete your  
bathroom sanctuary.







# CLASSICAL

A Chrome finish is familiar and we have seen and enjoyed its inclusion in bathrooms for decades. But that longevity, apart from making it a beautiful and safe choice, also makes

it one of the perfect, long term ageless decisions for anyone wanting their bathroom to look great for decades to come. Paired with a white, light scheme, Chrome literally shines.







# CREATIVE

Chrome is the perfect choice if you really want to be creative with your tile and bathroom inclusions without stealing the limelight. Feel free to push the boundaries with bold colour,

pattern and textural choices from tiles to towels and décor, confident that your hero pieces will shine without having to share the spotlight.











With over 75 years of experience, we believe quality bathrooms are a balance of form, function and looks. Our designs and innovation bring to life a guiding vision of creating sustainable luxury. Design that enables you to enjoy bathroom experiences that both complement and elevate your lifestyle, from an energising morning start to an indulgent, relaxing moment of luxury, all underpinned by sustainability.

Designing for Australians and New Zealanders, from all walks of life, with different tastes and needs; we have a wide range of classic to artisanal styles, smart designs and sustainable innovations providing you with everything you need to create the *sanctuary of your dreams.*

[www.caroma.com.au](http://www.caroma.com.au) | [www.caroma.co.nz](http://www.caroma.co.nz)

© Copyright 2021. Caroma Industries Ltd. ABN 35 000 189 499. All rights reserved. Material and design specifications subject to change without notice. Product colour reproduction is as near to actual product colour as production methods allow. Warning: Products in this brochure are the subject of registered designs and patents. \* is a registered trademark of Caroma Industries. This brochure relates to Australian products only and some product, design or specifications may differ in other countries.