

# caroma®

## Compact

Vitreous China

Wall Basin

Nominal Size 560mm x 230mm

CI/SfB	(74.2)	g3
Date	July 2008	

Supersedes all previous issues

# 1.09.1



Shown with chrome waste (supplied as standard late 2008).

# Compact

## Vitreous China Wall Basin

Basin Size: 560mm x 230mm (nominal)



A small hand basin designed for toilet areas where space is restricted. The minimal 230mm projection-from-wall dimension is of particular value where a larger basin cannot be installed.

**Tap Holes:** The basin is available in: a one taphole right hand option Code No.635115; and a two taphole option Code No.635125.

**Waste Outlet:** The basin has been designed for the Caroma Uni-waste outlet suitable for a 40mm trap connection.

Coloured plastic flush fitting Uni plug and waste supplied. For applications where a chrome plated brass waste is required there are four suitable Uni-wastes available in the following options — Flush Fitting Plug and Waste Code No.687140, Vandal Resistant Flush Fitting Plug and Waste Code No.687141, Covered Plug and Waste Code No.687142 and Vandal Resistant Covered Plug and Waste Code No.687143.

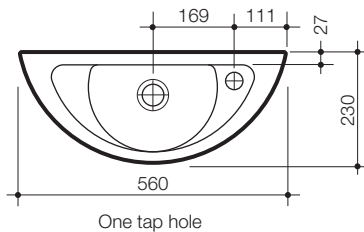
**Bowl Capacity:** 2 litres to overflow.

**Overflow:** Overflow available only. Designed for maximum tap flow rate of 15 litres/minute.

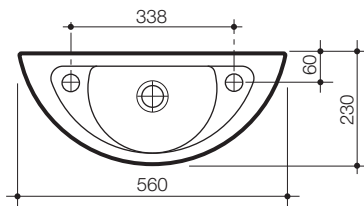
**Fixing:** The Compact basin is fixed to wall with **D.200 Basin Fixing Kit** – Included. Bolts directly to the finished wall using a cammed plastic bush for fine basin level adjustment. Includes lag screws and wall plugs for both masonry and timber stud wall finishes.

**Colours:** White only.

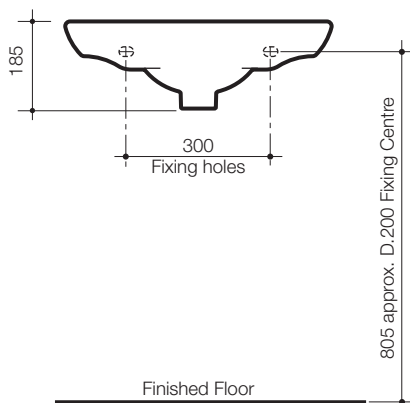
**Dimensions:** All dimensions are in millimetres and are subject to normal manufacturing variations. Caroma pursues a policy of continuing improvement in design and performance of its products. The right is therefore reserved to vary specifications without notice.



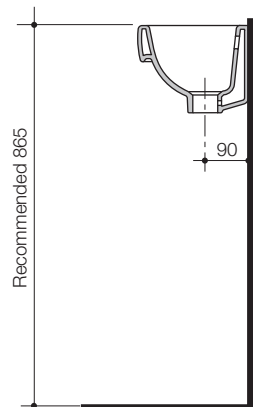
One tap hole



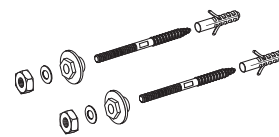
Two tap holes (pillar taps)



Finished Floor



Recommended 865



**D.200 Basin Fixing Kit**  
included with basin